



STATIONARY MECHANICAL REWINDING REELS





APT/C

GB HOSE REEL WITH MECHANICAL REWIND:

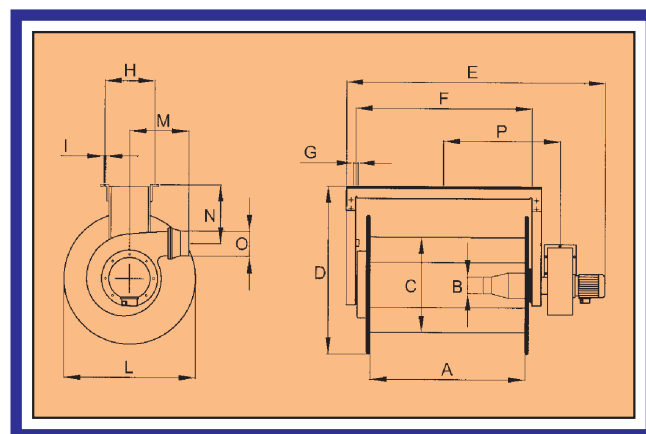
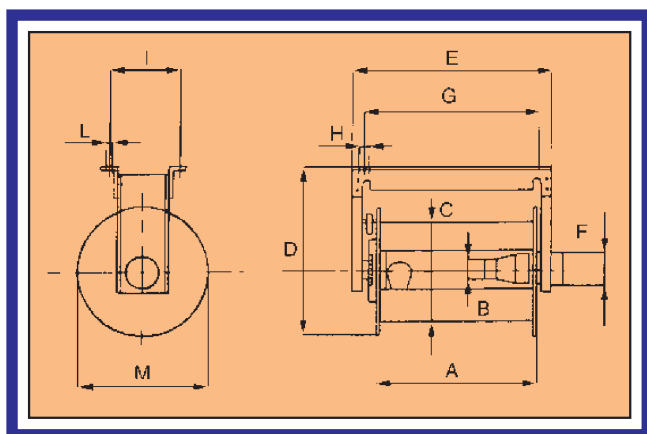
simple, lightweight but reliable, thanks to the high quality of the materials used. The APT model is equipped with a locking mechanism to stop the hose at the desired height. It can be fitted on either the wall or the ceiling. Thanks to its compact size, the APT model is ideal for use with cars and motorcycles. Suitable for centralized extraction system. Complete with flexible hose mod. T-GAS, adjustable safety stop ATS, nozzle BNT, hose-clamp and with rubber covers. On request, the APVT could be supplied with automatic exhauster starting device (SYSTEM-GO, SWB C1 o C2)



APVT/C

GB HOSE REEL WITH MECHANICAL REWIND:

differs from "APT" model in the coupling with an "LAM" series electric exhauster. The APVT model provides excellent extraction even with a hose up to 10 metres long. Thanks to its compact size, the APVT model is ideal for cars and motorcycles workshops where autonomous workstations are needed. Complete with flexible hose mod. T-GAS, adjustable safety stop ATS, nozzle BNT, hose-clamp and with rubber covers. On request, the APVT could be supplied with automatic exhauster starting device (SYSTEM-CTRL)



Mod	Version	A (mm)	B ø(mm)	C ø(mm)	D (mm)	E (mm)	F ø(mm)	G (mm)	H (mm)	I (mm)	L (mm)	M ø(mm)	Peso Kg
APT	75/7	600	75	350	600	709	120	639	40	246	10	540	43
	75/10	600	75	350	600	709	120	639	40	246	10	540	46

Mod	Version	A (mm)	B ø(mm)	C ø(mm)	D (mm)	E (mm)	F ø(mm)	G (mm)	H (mm)	I (mm)	L ø(mm)	M ø(mm)	N (mm)	O ø(mm)	P (mm)	Peso Kg	HP
APVT	75/7	600	75	350	600	1110	639	40	246	10	540	273	235	150	495	55	0,5
	75/10	600	75	350	600	1110	639	40	246	10	540	273	235	150	495	57	0,5

APTC/C

GB HOSE REEL WITH MECHANICAL REWIND:

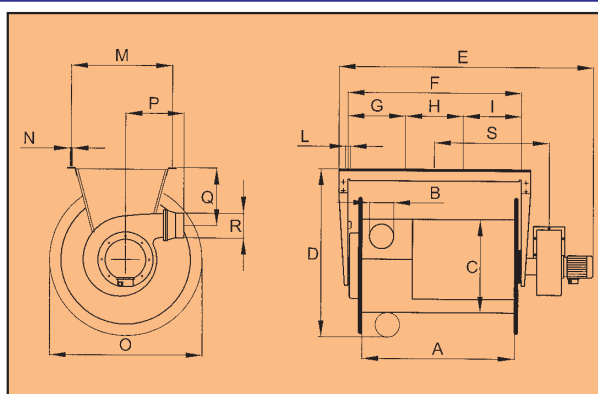
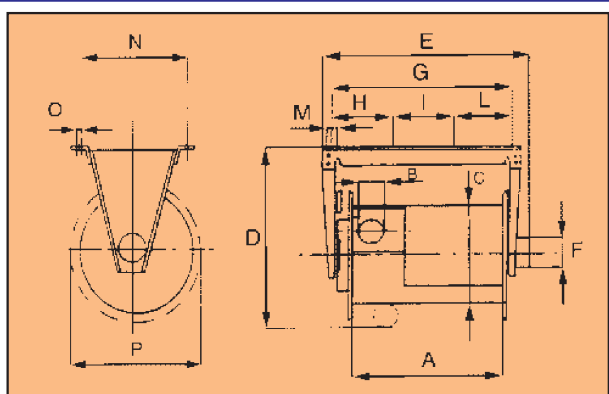
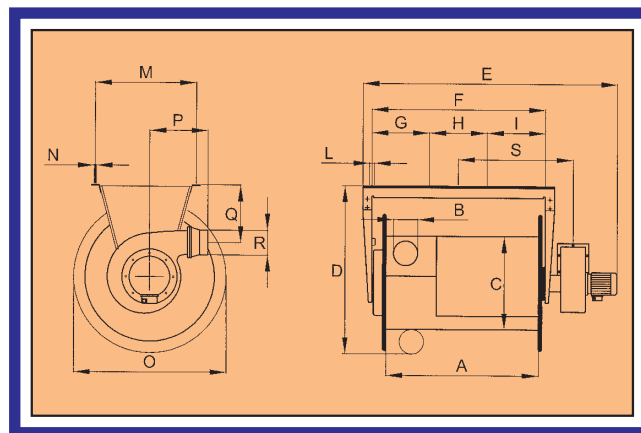
Lightweight but extremely sturdy, thanks to the high quality of the materials used. The APTC-C is equipped with a locking mechanism stop the hose at the desired height. It can be fitted on either the wall or the ceiling. Complete with flexible hose mod. T-GAS, adjustable safety stop ATS, nozzle BNT, hose-clamp and with rubber covers. Suitable for centralized extraction system. On request, the APVTC could be supplied with automatic exhauster starting device (SYSTEM-GO, SWB C1 o C2)



APVTC/C

GB HOSE REEL WITH MECHANICAL REWIND

Differs from APTC-C model in the coupling with an "LAM" series electric exhauster. Thanks to its compact size, the APVTC is ideal for cars and motorcycles workshops where autonomos workstation are needed. It can be fitted on either the wall or the ceiling. Complete with flexible hose mod. T-GAS, adjustable safety stop ATS, nozzle BNT, hose-clamp and with rubber covers. Suitable for centralized extraction system. On request, the APVTC could be supplied with automatic exhauster starting device (SYSTEM-CTRL)



Mod	Version	A (mm)	B ø(mm)	C ø(mm)	D (mm)	E (mm)	F ø(mm)	G (mm)	H (mm)	I (mm)	L (mm)	M (mm)	N (mm)	O (mm)	P ø(mm)	Peso Kg
APTC	75/13	850	75	350	631	970	120	914	305	304	305	30	307	12	540	49
	100/7	850	100	350	676	970	120	914	305	304	305	30	311	12	580	49
	100/10	850	100	350	676	970	120	914	305	304	305	30	311	12	580	53

Mod	Version	A (mm)	B ø (mm)	C ø (mm)	D (mm)	E (mm)	F (mm)	G (mm)	H (mm)	I (mm)	L (mm)	M (mm)	N (mm)	O ø (mm)	P (mm)	Q (mm)	R ø (mm)	S (mm)	Peso Kg	HP
APVTC	75/13	850	75	350	631	1370	914	305	304	305	30	307	12	540	280	285	150	625	50	0,5
	100/7	850	100	350	676	1370	914	305	304	305	30	311	12	580	280	285	150	625	50	0,5
	100/10	850	100	350	676	1370	914	305	304	305	30	311	12	580	280	285	150	625	63	0,5



AM

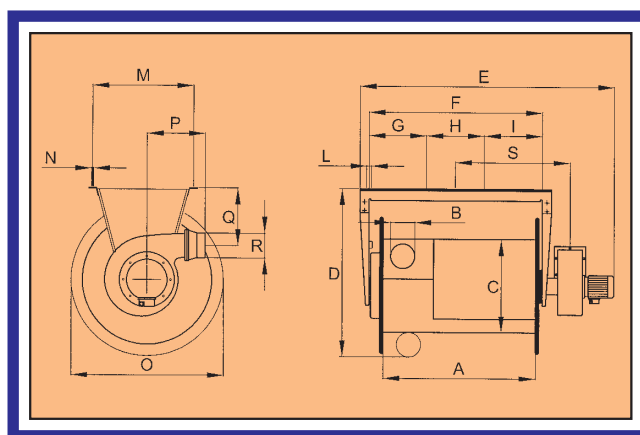
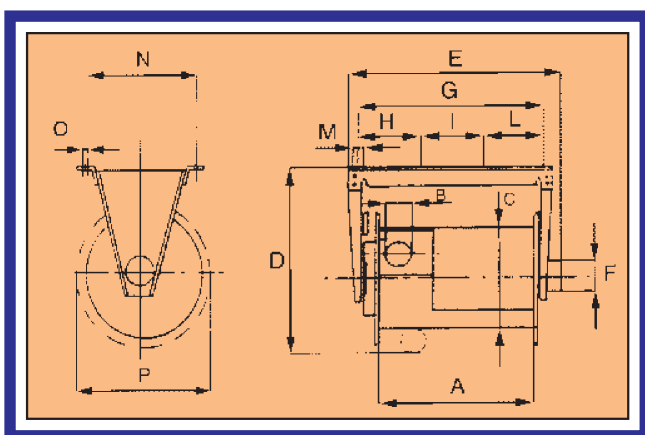
GB HOSE REEL WITH MECHANICAL REWIND:

Without flexible hose, lightweight but extremely sturdy, thanks to the high quality of the materials used. The AM model is equipped with a locking mechanism to stop the hose at the desired height. It can be fitted to either the wall or the ceiling and, on request, equipped with an adjustable safety stop (ATS). Suitable for centralized extraction system. On request, the AMA could be supplied with automatic exhaustor starting device (SYSTEM-GO, SWB C1 o C2)

AMA

GB HOSE REEL WITH MECHANICAL REWIND:

Differs from "AM" model in the coupling with an "LAM" series electric exhaustor. The AMA model provides excellent extraction even with a hose up to 13 metres long. It is particularly suitable for use in workshops where autonomous workstation are needed. On request, the AMA could be supplied with automatic exhaustor starting device (SYSTEM-CTRL)



Mod	Version	A (mm)	B Ø(mm)	C Ø(mm)	D (mm)	E (mm)	F Ø(mm)	G (mm)	H (mm)	I (mm)	L (mm)	M (mm)	N (mm)	O (mm)	P Ø(mm)	Peso Kg
AM	100/13	960	100	450	740	1170	150	1096	365	366	365	40	432	12	670	55
	125/7	720	125	450	795	930	150	856	285	286	285	40	444	12	730	45
	125/10	720	125	450	795	930	150	856	285	286	285	40	444	12	730	59
	125/13	960	125	450	795	1170	150	1096	365	366	365	40	444	12	730	61
	150/10	960	150	450	845	1170	150	1096	365	366	365	40	455	12	780	55

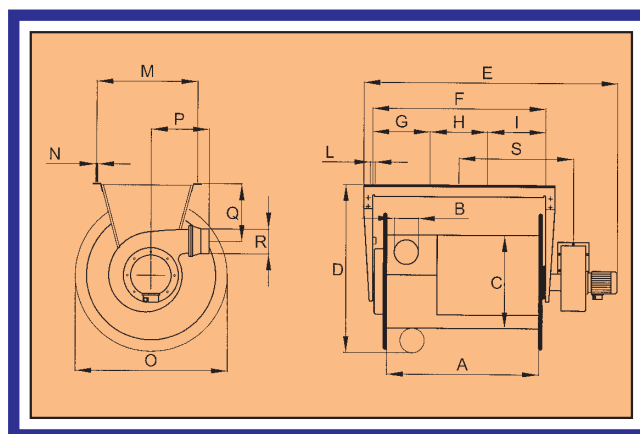
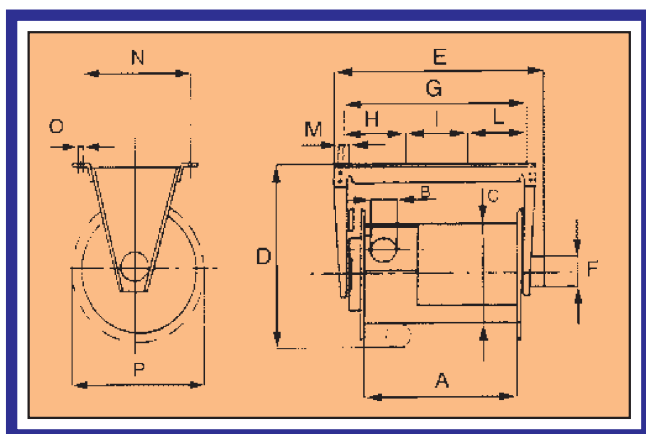
Mod	Version	A (mm)	B Ø (mm)	C Ø (mm)	D (mm)	E (mm)	F (mm)	G (mm)	H (mm)	I (mm)	L (mm)	M (mm)	N (mm)	O Ø (mm)	P (mm)	Q (mm)	R Ø (mm)	S (mm)	Peso Kg	HP
AMA	100/13	960	100	450	740	1565	1096	365	366	365	40	432	12	670	280	300	150	725	67	0,5
	125/7	720	125	450	795	1165	856	285	286	285	40	444	12	730	280	325	180	615	57	1
	125/10	720	125	450	795	1360	856	285	286	285	40	444	12	730	280	325	180	735	79	1
	125/13	960	125	450	795	1600	1096	365	366	365	40	444	12	730	280	325	180	735	81	1
	150/10	960	150	450	845	1600	1096	365	366	365	40	455	12	780	280	350	180	735	75	1

AM-MAXI

GB HOSE REEL WITH MECHANICAL REWIND:
lightweight but extremely sturdy, thanks to the high quality of the materials used. The AM-MAXI model is equipped with a locking mechanism to stop the hose at the desired height. It can be fitted on either the wall or the ceiling and, on request, equipped with an adjustable safety stop (ATS). Suitable for centralized extraction system. On request, the AMA could be supplied with automatic exhauster starting device (SYSTEM-GO, SWB C1 o C2)

AMA-MAXI

GB HOSE REEL WITH MECHANICAL REWIND:
differs from "AM-MAXI" model in the coupling with an "LAM" series electric exhauster. The AMA-MAXI model provides excellent extraction even with a hose up to 15 metres long. It is particularly suitable for use in workshops where autonomous workstation are needed. On request, the AMA could be supplied with automatic exhauster starting device (SYSTEM-CTRL)



Mod	Version	A (mm)	B ø(mm)	C ø(mm)	D (mm)	E (mm)	F ø(mm)	G (mm)	H (mm)	I (mm)	L (mm)	M (mm)	N (mm)	O (mm)	P ø(mm)	Peso Kg
AM MAXI	125/15	960	125	625	980	1200	150	966	322	322	322	30	530	12	875	60
	125/17	960	125	625	980	1200	150	966	322	322	322	30	530	12	875	62
	150/13	960	150	625	1030	1200	150	966	322	322	322	30	530	12	925	60
	180/10	960	180	625	1120	1200	150	966	322	322	322	30	542	12	985	60
	200/10	960	200	625	1175	1200	150	966	322	322	322	30	570	12	1053	65

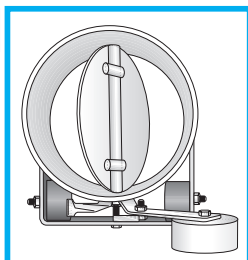
Mod	Version	A (mm)	B ø (mm)	C ø (mm)	D (mm)	E (mm)	F (mm)	G (mm)	H (mm)	I (mm)	L (mm)	M (mm)	N (mm)	O ø (mm)	P (mm)	Q (mm)	R ø (mm)	S (mm)	Peso Kg	HP
AMA MAXI	125/15	960	125	625	980	1540	966	322	322	322	30	530	12	875	280	355	180	661	80	1,5
	125/17	960	125	625	980	1540	966	322	322	322	30	530	12	875	280	355	180	661	82	1,5
	150/13	960	150	625	1030	1540	966	322	322	322	30	530	12	925	280	355	180	661	80	1,5
	180/10	960	180	625	1120	1410	966	322	322	322	30	542	12	985	280	380	180	661	80	1,5
	200/10	960	200	625	1139	1540	966	322	322	322	30	570	12	1053	280	380	180	661	83	1,5



ACCESSORIES

SERRANDA

- GB Open close valve for inside placement into stationary and sliding hose reels.



ATS

- GB Adjustable safety stops



SYSTEM-CTRL

- GB Devices for the automatic start-up and switch off of the electro exhauster engines with power unit and arrangement for SYSTEM-GO control microswitch

SYSTEM-GO

- GB Micro switch for the automatic extraction control suitable for mechanical rewinding reels



SWB-C1

- GB Switch board for centralized exhausters with pre-arrangement for SYSTEM-GO control microswitch

SWB-C2

- GB Switchboard for exauster from 7,5 HP with λ connection with pre-arrangement for SYSTEM-GO control microswitch

Attention: We recommend adding the safety stop model ATS to all mechanical rewinding reels